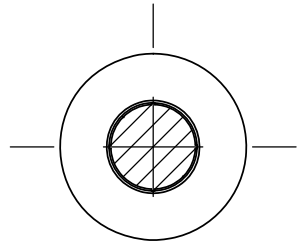
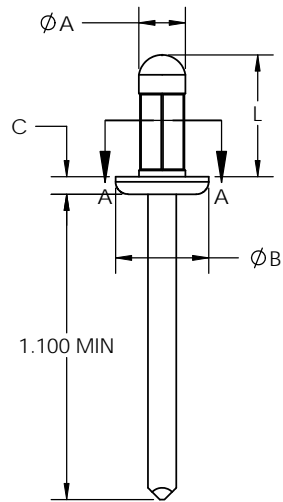


8 7 6 5 4 3 2 1




SECTION A-A
SCALE 4 : 1



NOMINAL DIA	PART NUMBER	GRIP RANGE	LENGTH	BODY DIA	HEAD DIA	HEAD HT	MAND DIA.	HOLE SIZE
1/8"	ABF41-42MGCT	.031 - .125	.280 .230	.125 .1205	.262 .243	.051 .034	.057 NOM.	.133 .129
	ABF41-43MGCT	.031 - .187	.410 .340					
	ABF42-44MGCT	.062 - .252	.470 .410					
	ABF43-45MGCT	.125 - .312	.540 .470					
	ABF45-46MGCT	.187 - .375	.600 .530					
5/32"	ABF52-54MGCT	.046 - .250	.490 .430	.160 .155	.321 .302	.061 .044	.086 NOM.	.166 .160
	ABF53-55MGCT	.125 - .312	.540 .490					
	ABF54-56MGCT	.156 - .375	.620 .550					
3/16"	ABF62-64MGCT	.062 - .250	.550 .460	.1900 .1855	.396 .377	.071 .054	.108 NOM.	.199 .191
	ABF64-66MGCT	.156 - .375	.670 .600					
	ABF63-67MGCT	.187 - .437	.740 .650					
	ABF66-68MGCT	.250 - .500	.800 .710					
	ABF610-612MGCT	.500 - .781	1.110 1.020					

REVISIONS				
ZONE	REV.	DESCRIPTION	DATE	APPROVED
	A	REDRAWN	05/13/2013	AV

 RIVET INDUSTRIAL RIVET & FASTENER CO. 200 PARIS AVE NORTHVALE, NJ 07647 USA	UNLESS OTHERWISE SPECIFIED	NAME	DATE	TITLE: MULTIGRIP CT ALUMINUM/STAINLESS	
	TOLERANCES: ±	DRAWN	AV		11/15/2011
	FRACTIONAL: ±	CHECKED	AV		11/15/2011
	ANGULAR: ±	ENG APPR.	AV		11/15/2011
XX: ±	MFG APPR.	AV	11/15/2011		
XXX: ±	Q.A.	AV	11/15/2011		
MATERIAL: 5052 ALUMINUM	MANDREL MATERIAL: 18-8	DWG. NO.		REV	
HEAT TREAT: ANNEAL	MANDREL HEAT TREAT: NONE	ABF-MGCT - MFG DWG		A	
FINISH: POLISHED	MANDREL FINISH: CLEAN				
DO NOT SCALE DRAWING		SCALE: 2:1	WEIGHT:	SHEET 1 OF 1	

8
PROPRIETARY AND CONFIDENTIAL
 THE INFORMATION CONTAINED IN THIS DRAWING IS THE SOLE PROPERTY OF <INSERT COMPANY NAME HERE>. ANY REPRODUCTION IN PART OR AS A WHOLE WITHOUT THE WRITTEN PERMISSION OF <INSERT COMPANY NAME HERE> IS PROHIBITED.

7 6 5 4 3 2 1